

**CCHCR1 Antibody (Center)**  
**Affinity Purified Rabbit Polyclonal Antibody (Pab)**  
**Catalog # AP8528C**

**Specification**

---

**CCHCR1 Antibody (Center) - Product Information**

Application	IF, FC, IHC-P, WB,E
Primary Accession	<a href="#">Q8TD31</a>
Reactivity	Human
Host	Rabbit
Clonality	Polyclonal
Isotype	Rabbit IgG
Calculated MW	88671
Antigen Region	599-627

**CCHCR1 Antibody (Center) - Additional Information**

**Gene ID** 54535

**Other Names**

Coiled-coil alpha-helical rod protein 1, Alpha-helical coiled-coil rod protein, Putative gene 8 protein, Pg8, CCHCR1, C6orf18, HCR

**Target/Specificity**

This CCHCR1 antibody is generated from rabbits immunized with a KLH conjugated synthetic peptide between 599-627 amino acids from the Central region of human CCHCR1.

**Dilution**

IF~~1:10~50  
FC~~1:10~50  
IHC-P~~1:50~100  
WB~~1:1000  
E~~Use at an assay dependent concentration.

**Format**

Purified polyclonal antibody supplied in PBS with 0.09% (W/V) sodium azide. This antibody is purified through a protein A column, followed by peptide affinity purification.

**Storage**

Maintain refrigerated at 2-8°C for up to 2 weeks. For long term storage store at -20°C in small aliquots to prevent freeze-thaw cycles.

**Precautions**

CCHCR1 Antibody (Center) is for research use only and not for use in diagnostic or therapeutic procedures.

**CCHCR1 Antibody (Center) - Protein Information**

**Name** CCHCR1

**Synonyms** C6orf18, HCR

**Function** May be a regulator of keratinocyte proliferation or differentiation.

**Cellular Location**

Cytoplasm. Nucleus.

**Tissue Location**

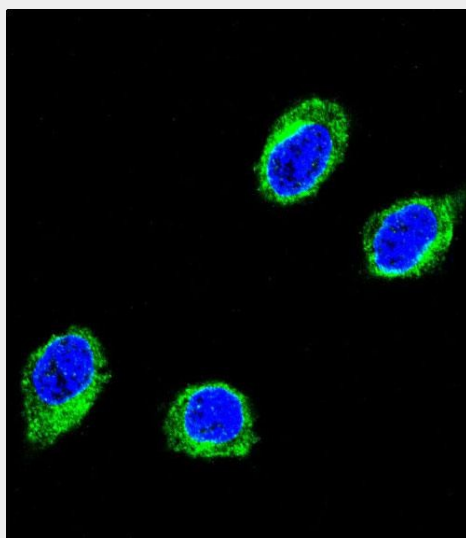
Found in all tissues tested, abundantly expressed in heart, liver, skeletal muscle, kidney and pancreas, and to a lesser extent in lung and placenta. Overexpressed in keratinocytes of psoriatic lesions

### **CCHCR1 Antibody (Center) - Protocols**

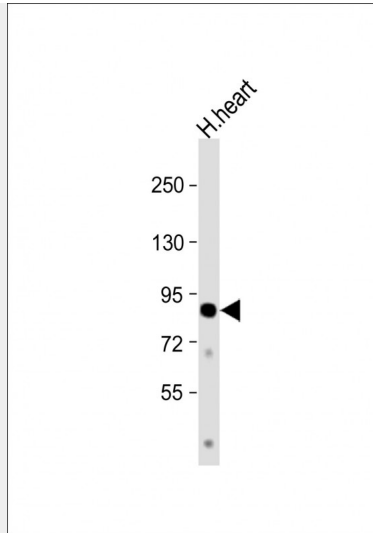
Provided below are standard protocols that you may find useful for product applications.

- [Western Blot](#)
- [Blocking Peptides](#)
- [Dot Blot](#)
- [Immunohistochemistry](#)
- [Immunofluorescence](#)
- [Immunoprecipitation](#)
- [Flow Cytometry](#)
- [Cell Culture](#)

### **CCHCR1 Antibody (Center) - Images**



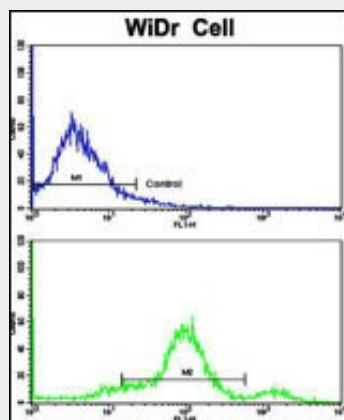
Confocal immunofluorescent analysis of CCHCR1 Antibody (Center) (Cat. #AP8528c) with 293 cell followed by Alexa Fluor® 488-conjugated goat anti-rabbit IgG (green). DAPI was used to stain the cell nuclear (blue).



Anti-CCHCR1 Antibody (Center) at 1:1000 dilution + human heart lysate Lysates/proteins at 20  $\mu$ g per lane. Secondary Goat Anti-Rabbit IgG, (H+L), Peroxidase conjugated at 1/10000 dilution. Predicted band size : 89 kDa Blocking/Dilution buffer: 5% NFDM/TBST.



Formalin-fixed and paraffin-embedded human skeletal muscle reacted with CCHCR1 Antibody (Center), which was peroxidase-conjugated to the secondary antibody, followed by DAB staining. This data demonstrates the use of this antibody for immunohistochemistry; clinical relevance has not been evaluated.



Flow cytometric analysis of wiDr cells using CCHCR1 Antibody (Center)(bottom histogram) compared to a negative control cell (top histogram). FITC-conjugated goat-anti-rabbit secondary antibodies were used for the analysis.

**CCHCR1 Antibody (Center) - Background**

CCHCR1 may be a regulator of keratinocyte proliferation or differentiation.

**CCHCR1 Antibody (Center) - References**

Asumalahti,K., et.al., Hum. Mol. Genet. 9 (10), 1533-1542 (2000)  
Oka,A., et.al., Hum. Mol. Genet. 8 (12), 2165-2170 (1999)